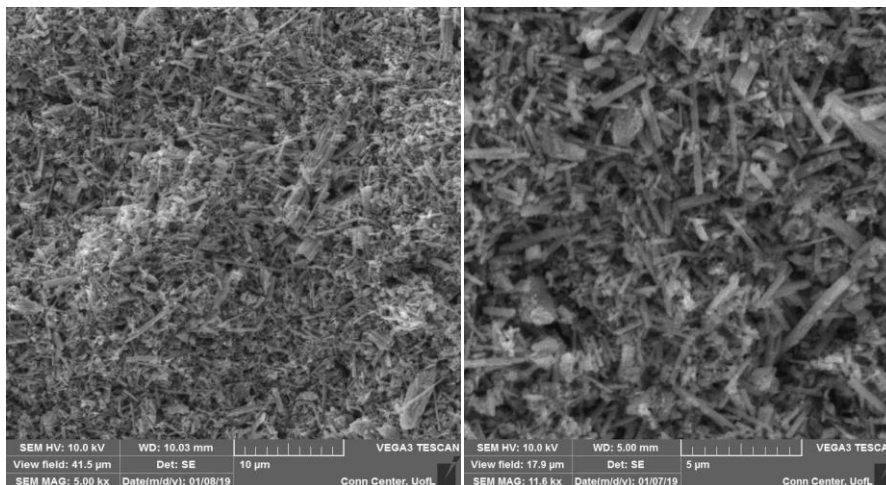


AdE-LTO-200

Lithium Battery Materials



Material Characteristics

Product Name	AdE-LTO-200
Product description	Carbon Coated (1-2%) Lithium Titanate (LTO) powder
Morphology	Nanowire of average length 6 µm, diameter 240 nm
Size	D50: < 9 µm
Phase	Spinel phase $\text{Li}_4\text{Ti}_5\text{O}_{12}$
BET surface area	20 m ² /g
Bulk density	>0.7 g/cc
Purity	>99% (K<0.5%)

Coating Characteristics

Solids	30-35%
Viscosity	4000-5000 cP
Active LTO loading	>2 g/cm ³

Electrical Characteristics

Nominal & Minimum Discharge Capacity	170, 155 mAh/g (@0.2C)
Nominal & Minimum Cycle Efficiency	97, 90%
Nominal & Minimum Discharge Voltage	1.55, 1.53 V