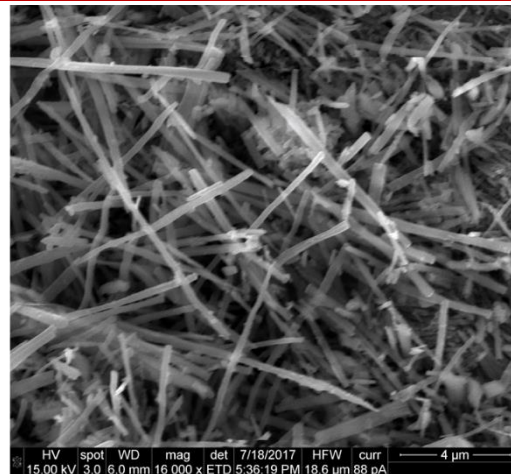
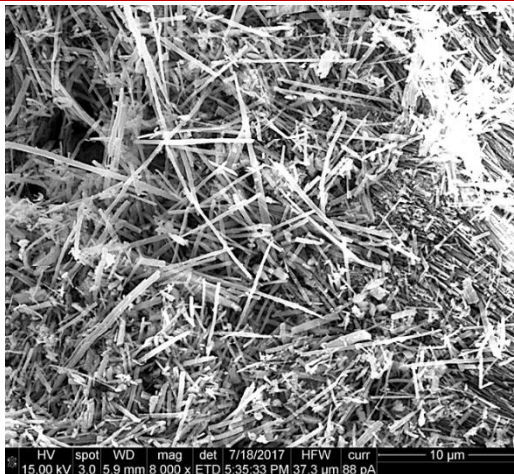


# AdE-LTO-100

## Lithium Battery Materials



### Material Characteristics

Product Name	AdE-LTO-100
Product description	Lithium Titanate (LTO) powder
Morphology	Nanowire of average length 6 μm, diameter 240 nm
Size	D50: < 8.5 μm
Phase	Spinel phase $\text{Li}_4\text{Ti}_5\text{O}_{12}$
BET surface area	11 $\text{m}^2/\text{g}$
Bulk density	>0.7 g/cc
Purity	>99% (K<0.5%)

### Coating Characteristics

Solids	30-35%
Viscosity	4000-5000 cP
Active LTO loading	>2 $\text{g}/\text{cm}^3$

### Electrical Characteristics

Nominal & Minimum Discharge Capacity	170, 155 mAh/g (@0.2C)
Nominal & Minimum Cycle Efficiency	97, 90%
Nominal & Minimum Discharge Voltage	1.55, 1.53 V